

**SANT NIRANKARI PUBLIC SHOOOL
AVTAR ENCLAVE
CLASS-III (EVS)
(2020-21)
CHAPTER-16
WAYS OF TRAVELLING**

**Assignment Date- 2-05-2020
Submission date-7-05-2020**

GENERAL INSTRUCTIONS:

- **Read the content below carefully**
- **Answer the following questions based on the content.**

LET US READ:

- People travel from one place to another for many reasons such as to deliver or buy daily supplies, to travel with family to go to malls or to some far off place, to meet friends and relatives or to attend a wedding. They travel by means of a vehicle.
- **Vehicles** are the means of transport that help move people and goods from one place to another.
- Modern day transport is of three kinds-**land, water and air.**

HISTORY OF TRANSPORT

- The first means of travelling from one place to another was by walking, running or swimming.
- The **wheel** is one of the most important inventions made by human beings.
- The invention of **steam engine** changed the manner of transportation.

TRANSPORTATION ON LAND

- Vehicles that move on land are means of **land transportation.**
- Some **examples** of land transportation are- carts, rickshaws, bicycles, scooters, motorcycles, cars, trucks, buses, trams, metro and trains.
- **In villages**, carts and tractors are used as means of travelling.
- **Trains** are used to travel to far off cities.
- **Trams** move within the city.
- **Metros** are the fast and convenient way of travelling within the cities.

- In Mumbai, **local trains** are popular means of transport for the working people.
- India has the fourth largest railway network.
- Trains that carry people are **passenger trains** and the ones that carry goods such as coal, wheat and rice are called **goods train**.
- **Porters or coolies** carry our heavy luggage on the railway station. **Travelling ticket examiner or TTE** checks our ticket.
- Guards on trains carry red and green flags. When guard raises the green flag and blows a whistle, train driver starts the train.

LET'S PRACTICE

1. Write T for true and F for false:

- a. Trains are the fastest way of travelling.
- b. The first means of transport was the bullock cart.
- c. Trains, trams and metro move on a special metal track.

2. Fill in the blanks:

- a. A _____ is the person who checks our tickets on board in a train.
- b. _____ run on tracks within the city.
- c. A _____ is a person who wears a red uniform and can be seen helping people on railway platforms.
- d. A _____ is more than a hundred years old and one can still find it running on the hills.

3. Answer these questions:

- a. Why do we travel?
- b. How did the early humans travel before the wheel was invented?
- c. Name the people who work on the railway stations and on the trains. What does each one do?

**SANT NIRANKARI PUBLIC SHOOOL
AVTAR ENCLAVE
CLASS-III (EVS)
(2020-21)
CHAPTER-16
WAYS OF TRAVELLING (continued)**

**Assignment Date- 7-05-2020
Submission date-9-05-2020**

GENERAL INSTRUCTIONS:

- **Read the content below carefully**
- **Answer the following questions based on the content.**

- **LET US READ:**

TRANSPORT ON WATER

- All vehicles that sail on water are means of **water transport**.
- It is the **oldest means of transport**. Some **examples** are boats, ships, yachts, steamers and rafts.
- A **ship** is used for transporting goods to far off places.
- Fishers use **boats** to catch fish.
- Large modern cruise ships are called **liners**.
- **Ferries** carry people across rivers or lakes.
- **Submarines** are ships that move under water. These are used by military and scientists.

TRANSPORT BY AIR

- All vehicles that move in the air are means of **air transport**. They carry both people and goods.
- It is the fastest and modern means of transport.
- Examples are aeroplanes, helicopters, hot air balloons, gliders and rockets. People board these from airports

HOW DO WE TRAVEL?

- **Short distances** are covered using bicycles, scooters, motorcycles, buses and cars.
- **Longer distances** are covered using cars, trains, trams, metro, rails, buses,

trucks, aeroplanes and ships.

- Rockets are required to travel to outer space, like to go the moon or the planet mars.

SPECIAL VEHICLES

- Vehicles that are used for specific purposes are called **special vehicles** such as an ambulance, fire engine, police jeep, mail van, ice-cream cart and vegetable carts.
- An **ambulance** carries sick people to the hospital.
- A **fire-engine** is used for putting out fires.
- A **police jeep** carries police officers to help people.
- A **mail van** carries letters and parcels from post office to different parts of the city.
- An **Ice-cream cart** keeps the ice-cream frozen.
- **Vegetable cart** are used by vendors to sell vegetables and fruits.

Growing number of vehicles on the road causes air pollution. We should walk as much as possible and try not to use a vehicle for short distances.

LET'S PRACTICE

1. Write T for true and F for false:

- A mail van carries sick people to the hospital.
- We should try and walk as much as possible.

2. Cross the odd one out:

Cross (x) the odd one out.

1. rickshaw	<input type="checkbox"/>	metro	<input type="checkbox"/>	airplane	<input type="checkbox"/>	car	<input type="checkbox"/>
2. ferry	<input type="checkbox"/>	airplane	<input type="checkbox"/>	ship	<input type="checkbox"/>	boat	<input type="checkbox"/>
3. fire engine	<input type="checkbox"/>	police van	<input type="checkbox"/>	ice cream cart	<input type="checkbox"/>	truck	<input type="checkbox"/>
4. car	<input type="checkbox"/>	bus	<input type="checkbox"/>	scooter	<input type="checkbox"/>	bullock cart	<input type="checkbox"/>
5. glider	<input type="checkbox"/>	airplane	<input type="checkbox"/>	helicopter	<input type="checkbox"/>	bus	<input type="checkbox"/>

3. Fill in the blanks:

- a. _____ and _____ are used to carry goods and people on water.
- b. A _____ carries sick and injured people to the hospital.
- c. _____ is a special vehicle used to put out fires.
- d. A _____ is a ship that moves under water.

4. Answer these questions:

- a. Name some special vehicles. Write what they are used for?
- b. What are reasons for choosing a particular vehicle?

SANT NIRANKARI PUBLIC SCHOOL
AVTAR ENCLAVE PASCHIM VIHAR
CLASS – III
CHAPTER – 2
(GUI OPERATING SYSTEM)

DATE : 05/05/2020

SUBMISSION DATE: 11/05/2020



GUI Operating System



Targeted Skill Set:

Work with GUI. Set up wallpaper & Screen saver. Start Windows in Safe Mode. Shut down the computer properly.

Objectives:



Dear student, by the end of this chapter, you will be able to:

- Define the terms: booting, operating system and GUI.
- Identify various parts of Windows desktop.
- Work with icons, wallpaper & screen saver.
- Understand Normal and Safe modes.
- Start Windows in Safe mode.
- Shutdown a computer properly.

When you switch on the computer, which software loads very first on its own?

The operating system!

Yes, operating system loads on the computer as soon as we switch it on. Loading of operating system in computer's memory is called **booting**.

There are various operating systems namely Windows, Linux, MacOS etc.

We are using Windows operating system, so when you switch on the computer, Windows is seen on the monitor.



Question: If you switch on the computer on which Linux is installed. What will happen?

Answer: _____ will load in computer's _____ and we will see the logo of _____ on the monitor.



Operating System

Have you ever gone to a restaurant? You must have noticed that your parents place an order to the manager and waiter serves the food at your table. In other words, the manager runs the restaurant. In the same way, an operating system in a computer acts as a manager and runs the computer system.

An Operating System is a software that helps us to use or work on the computer system. It manages and controls the different parts of a computer system and makes them work together. It acts as an interface between the computer and the us. We click on various options to do our work. There are various types of operating systems. Some examples of operating system are as follows.

1) MS DOS

```
Command Prompt

C:\Users\ESOFT>ren myfile file1
The system cannot find the file specified.

C:\Users\ESOFT>ren
The syntax of the command is incorrect.

C:\Users\ESOFT>ren /?
Renames a file or files.

RENAME [drive:][path]filename1 filename2.
REN [drive:][path]filename1 filename2.
```

2) LINUX



3) MAC OS



4) MS Windows 10



MS Windows

The MS Windows is a popular operating system (OS). It was developed by Microsoft Corporation, USA. There are various versions of Windows namely Windows 95, Windows XP, Windows 7, Windows 8, Windows 10 etc.

MS Windows displays a Graphical User Interface (GUI) which is easy to use. GUI is made of various graphical parts like Start button, icons, menus, and task bar etc.

Windows 10 Desktop

Once the computer is started, the screen which appears on the monitor is called the **desktop**. Various components of a desktop are:

1. Wallpaper
2. Icons
3. Taskbar



Windows 10 Desktop



Windows 7 Desktop

In Windows 7

Gadgets are the utilities such as calendar, clock, currency, slideshow, etc. on the desktop. We can add or remove the gadgets on the desktop as per our choice.



Fun-task-tik ...

Dear Kids, take the help of the internet or your teacher and try to find some more examples of operating systems.

1. _____
2. _____

Let us discuss about these parts one by one.

Wallpaper: The wallpaper is the background picture on the desktop.



Icons: The small pictures on the screen are called the icons.



This PC



Network



*Recycle Bin
(Empty)*



*Recycle Bin
(Filled)*

In Windows 7



Computer




Network



Recycle Bin

Taskbar: This is a horizontal bar at the bottom of the desktop. Now, let us learn about the various parts of the taskbar.




Start Button:  The **Start button** is found on the left side of the taskbar. When we click on the Start button, a menu appears which is known as the **Start menu**. We can find and open all the programs from the **Start menu**.




*Windows 10
Start Menu*



*Windows 7
Start Menu*

Quick Launch toolbar:  The **Quick Launch** toolbar provides an easy access (in single- click) to our favourite programs. These programs can be opened in one click.

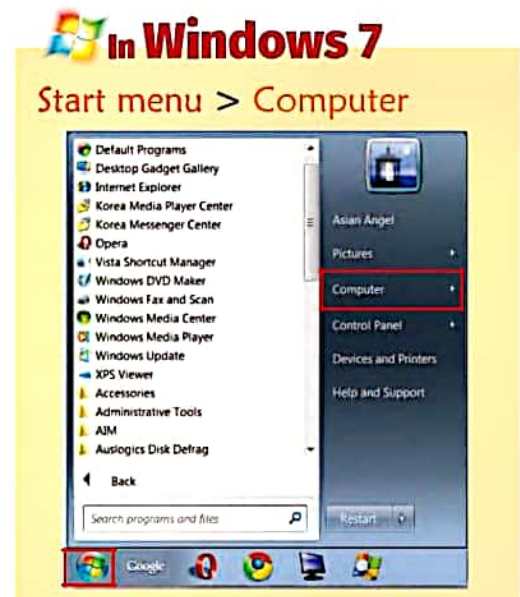
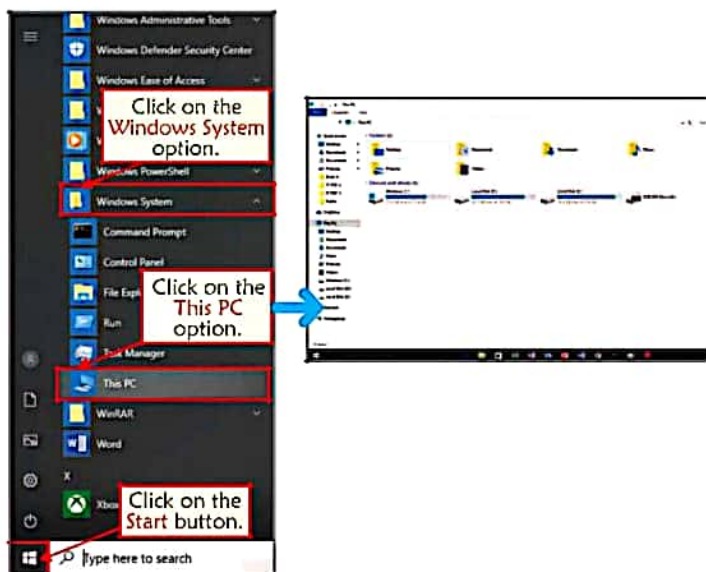
Middle Section:  The **Middle Section** shows us the programs and files we have opened and allows us to quickly switch between them.

System Tray:  The **System Tray** is used to show the date and time and various other notifications.

Open a Window using the Start button

Start menu contains the list of programs which are installed in the computer. To open a program follow the steps as given here.

1. Bring the mouse cursor over the **Start button** and left-click on it.
The **Start menu** appears.
2. Click on **Windows System** and then click on **This PC**.
The **This PC** window appears on the screen.



Working with the Desktop

Desktop displays icons over a coloured background or a wallpaper in the background.

Let us learn working with desktop icons.

Working with Desktop Icons

Every icon on the desktop is for a program. The name of that program is written below the icon. For example, icon of This PC will look like a desktop computer and icon of Recycle Bin looks like a dust bin because it keeps deleted files.

Some icons have a **small curved arrow** at their bottom which means they are shortcuts to the respective program.

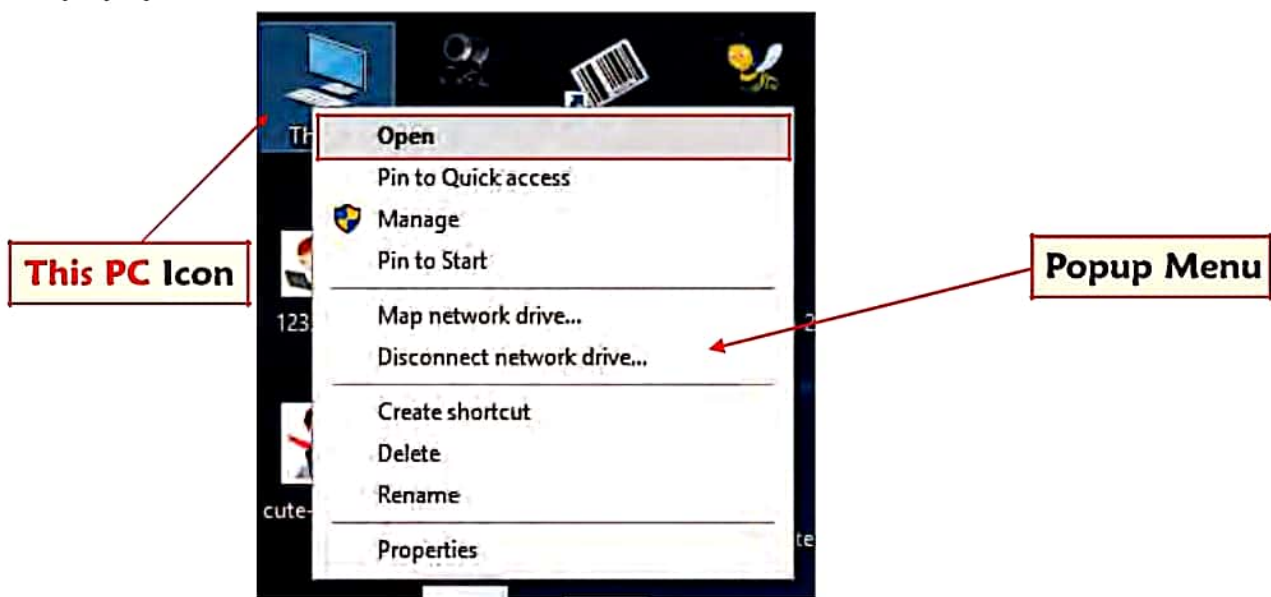


Let us learn about some operations we can do with desktop icons.

Opening an Icon

To open the program denoted by the icon, simply **double click** on that icon.

Another way is that you right click on the desired icon and select **Open** option from the popup menu.



Moving Icons

To move an icon, the steps are:

Press left button on the desired icon

Keep the left button pressed and move the mouse. Icon will move with the pointer.

Bring the pointer to the target location and release the left mouse button.

Arranging Icons

Arranging icons in an order is called **sorting**. Icons can be arranged in the following ways:

By their name: Icons will be arranged in the alphabetical order of their names.

By their types: All the icons of same type will come together.

By their size: Icons will arrange in order of their size.

By the date: Icons will arrange in order of their opening date.

To sort the icons, follow the steps given here.

1. Go to the **Desktop** and **right click** in any blank area.
2. In the popup menu, click on **Sort by** option.
3. Select the desired option to sort the icons.



Setting up the Wallpaper

Any image or design set on the desktop background is called **wallpaper**.

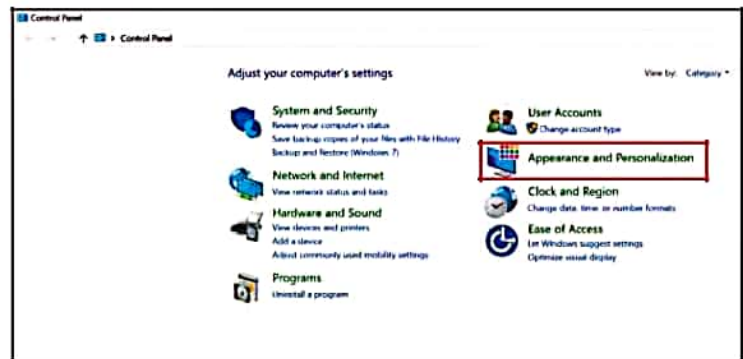
To set up the wallpaper, follow the steps given here.



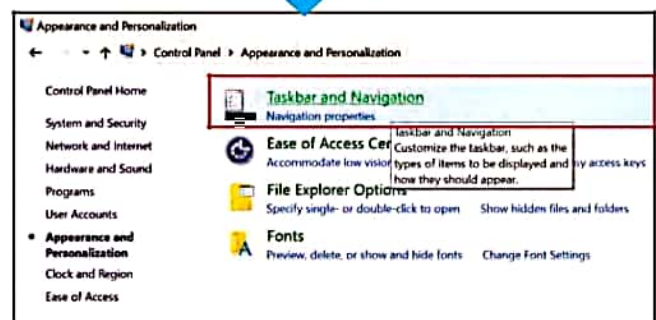
1. Click on the **Start** button > **Windows System** > **Control Panel**



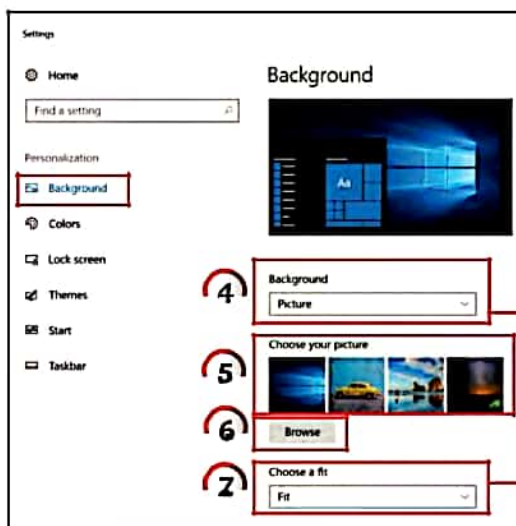
Click on the **Start** button > **Control Panel**



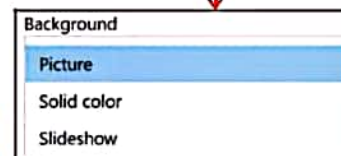
2. Click on **Appearance and Personalization**



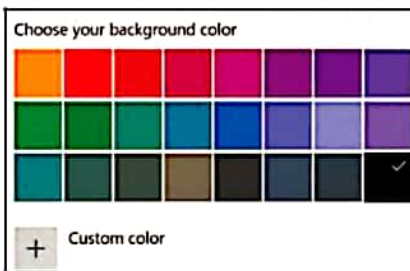
3. Click on **Taskbar and Navigation**



4. Click on **Background** and select **Picture** option from **Background** drop-down.



5. Select the required wallpaper.
6. For Picture, select the available pictures or click on **Browse** to locate and select any picture you wish to set as background.
7. Select desired picture position from **Choose a fit** dropdown (Fill, Fit, Stretch, Tile, Center and Span).



8. For Solid Color, select from the color palette or use **Custom color** option.

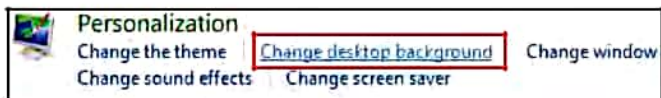


Skill Practice

Set a *landscape* as the *desktop background* from the available options.

WINDOWS 7

In **Control Panel**, click on **Appearance and Personalization** → **Change desktop background** > Select the required wallpaper and Picture position > Click on the **Save changes** button.



Setting up Screen Saver

When your computer is not in use for some time, an animated image appears on the monitor. This is called a screen saver.

The steps to setup a screen saver are:

1. Click on the **Start** button > **Control Panel** > **Appearance and Personalization** > **Taskbar and Navigation**.
2. Click on **Lock Screen** section.
3. Scroll down and select **Screen saver settings**. Screen saver dialog box will appear.
4. Click on the **Screen saver** dropdown and select the desired screen saver.
5. Set the **Wait** time.

6. Click on **OK** button.

For certain screen savers, you can click on **Settings...** button to apply additional settings. For example, for Photos screensaver, you need to select the desired pictures on your computer or for 3D Text, you need to specify the text, colour, motion, size and rotation speed etc.



Skill Practice

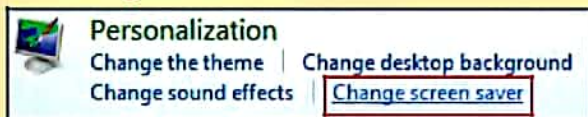


Set the name of your school as 3D text as screen saver on your computer.

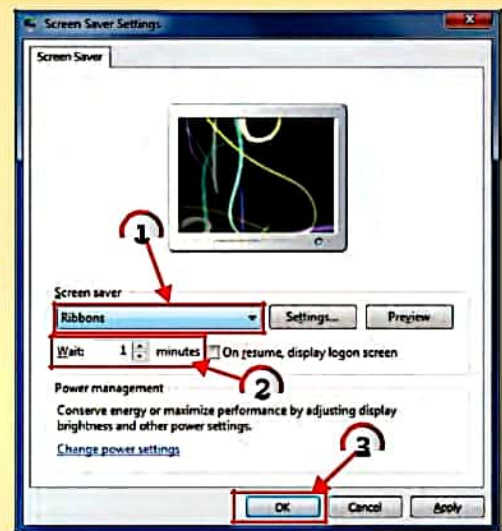


WINDOWS 7

In Control Panel, **Appearance and Personalization**
→ **Change screensaver**



1. Click on the **Screen saver** list box and select the required screen saver.
2. Set the waiting time in the **Wait** box (by clicking on the up and down arrow buttons).
3. Click on the **OK** button.



Note

1. You can change the settings of the some screen savers by clicking on the **Settings** button.
2. The default wait time for a screen saver is 1 minute.



IntelliBee

You can also right-click on the desktop and select the **Personalize** option.

Working Power Options

Windows is designed to use the computer (laptop) battery efficiently. We can decide how Windows must use the power supplied to the laptop. For example, we can decide that if the laptop is running on the battery then the intensity of screen should dim after some time.

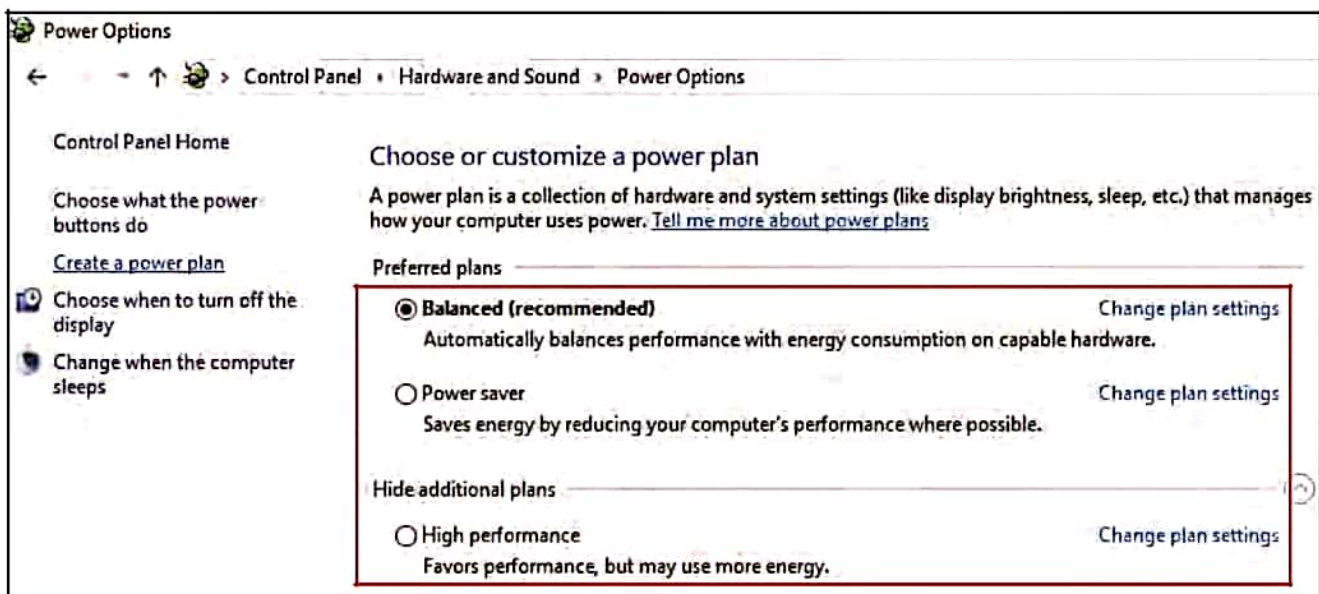
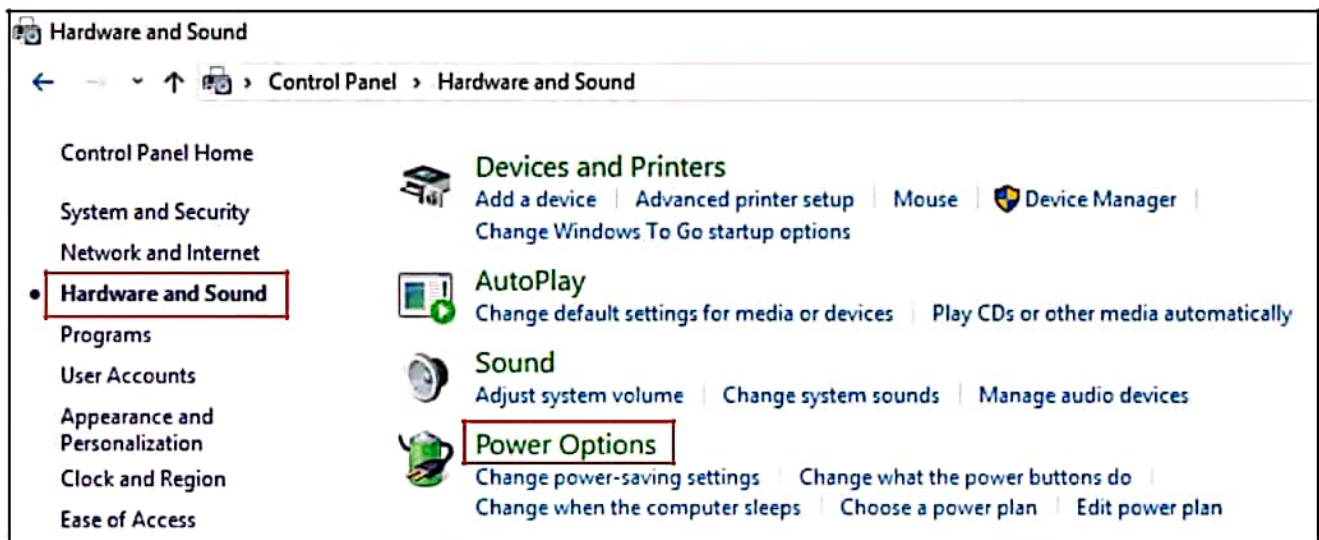
Windows provides 3 options to conserve power.

- ❖ **Balanced:** Windows automatically manages power consumption of the laptop.
- ❖ **Power saver:** Windows reduces performance of computer to save power. Computer may work slowly sometimes.
- ❖ **High performance:** Windows increases performance of computer and more power is consumed.

The above power options can be changed as required.

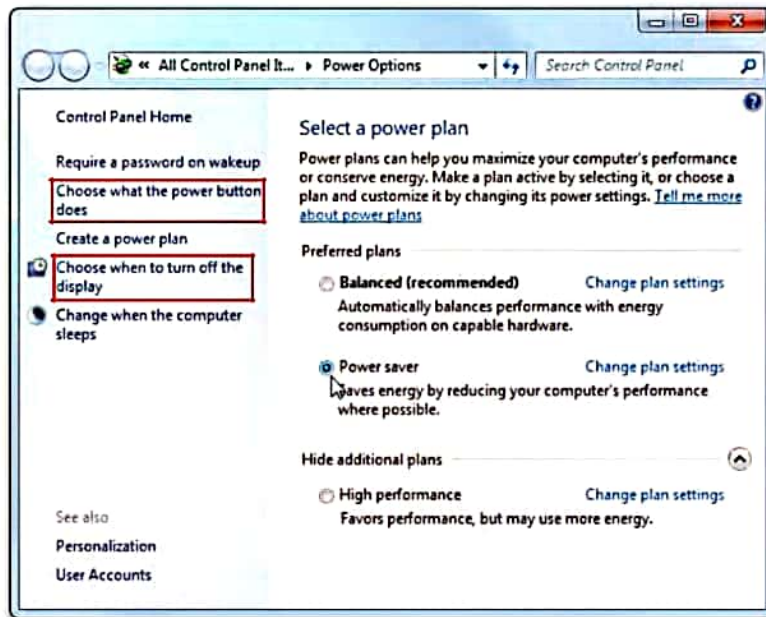
To open power options, below are the steps.

Click on the **Start** button > **Windows System** > **Control Panel** > **Appearance and Personalization** > **Hardware and Sound** > **Power Options**.



WINDOWS 7

Click on the **Start button > Control Panel > Appearance and Personalization > Hardware and Sound > Power Options.**

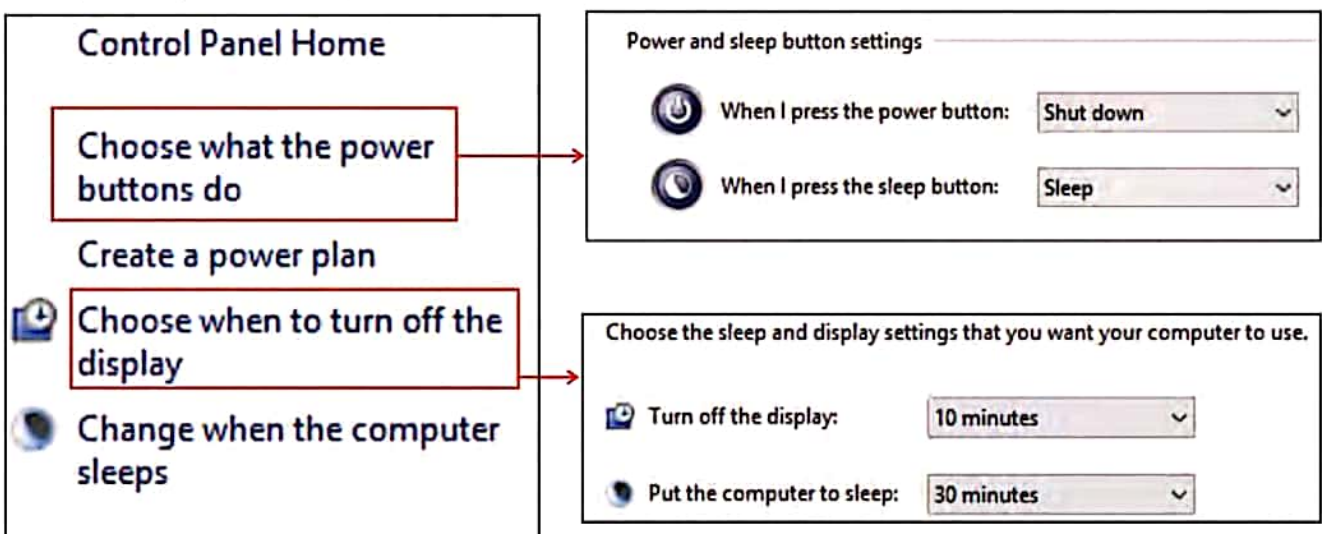


Changing Plan Settings

You can change following settings for your selected plan.

Choose what the power buttons do: Here, choose the function of Power button and Sleep button of your computer. You can decide whether computer will shutdown, sleep, hibernate or screen will turn off.

When to turn off the display: Set time after which display should turn off or computer goes to sleep mode.



Windows Working Mode

When you switch on the computer, several files of Windows operating system load in its memory. This is called **Normal** mode of Windows. But, sometimes, all the files of Windows fail to load or get corrupted. You can still load Windows with essential files only. This is called **Safe** mode of Windows. When Windows starts in safe mode, you can show the computer to the technician to fix the problem.

So, *safe mode is used to fix any problem with operating system.*

To start Windows in safe mode, follow the steps given here.

1. Switch on the computer.
2. As computer begins starting, press **F8** key a few times.

Advanced Options menu opens.

3. Using arrow keys, select **Safe** mode and press **Enter** key.



Shutting Down a Computer

After the work is completed, computer needs to be shut down properly. To shut down the computer, you have to follow the given steps:

1. Click on **Start** button.
2. Click on **Power** button.
3. Click on **Shut Down** option.
4. Switch off the monitor.
5. Switch off the UPS.
6. Switch off the power switch.





I have learnt...

- ◆ The process to start a computer is called booting.
- ◆ An operating system helps us to operate the computer system.
- ◆ Desktop contains Wallpaper, Icons, Taskbar and Gadgets (Windows 7).
- ◆ The Quick launch toolbar provides fast & easy access to the favourite programs.
- ◆ System tray shows the date and time, and also various other notifications.
- ◆ When we open a program, it always opens in a window.
- ◆ Double click on an icon to open the program denoted by it.
- ◆ Icons can be moved from one place to another on the Desktop.
- ◆ Icons can be arranged in different order or their names, type, size and date.
- ◆ Any image or design set on the desktop background is called wallpaper.
- ◆ When computer is not in use for some time screen saver appears on the monitor.
- ◆ In safe mode, operating system loads with essential files only.
- ◆ Safe mode is used to fix any problem with operating system.
- ◆ Computer needs to be shut down properly.



Fun-task-tik ...

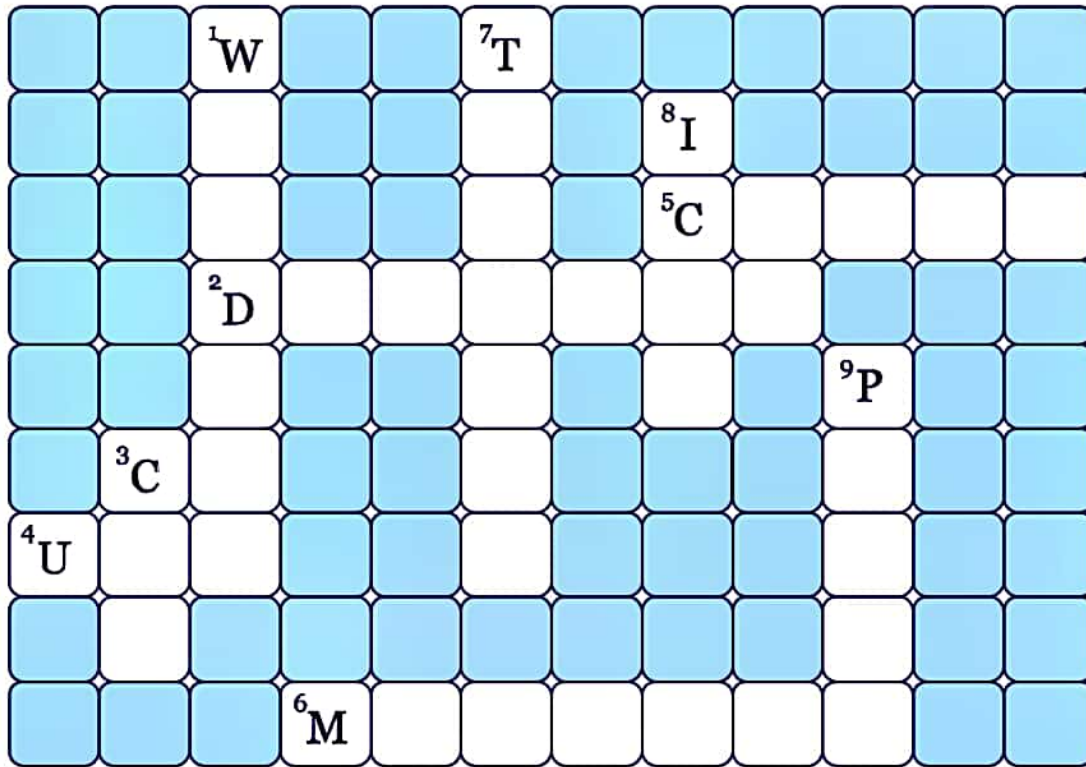
Complete the crossword given on next page with correct words.

Across

2. When computer starts,
_____ screen appears.
4. In the second step of switching
on a computer, switch ON
_____.
5. _____ on the Start button to
open the Start menu.
6. Desktop screen is displayed on
the _____.

Down

1. _____ is an operating system.
3. _____ is known as the brain of a
computer.
7. The horizontal bar at the bottom of the
desktop is known as the _____.
8. _____ are the small images on the
Desktop screen.
9. In the last step of switching off a computer,
switch off the _____ switch.



Exercise

A. Choose the correct answer.

1. Loading of operating system in computer's memory is called _____.

a) Booting	<input type="checkbox"/>	b) Starting	<input type="checkbox"/>
c) Safe mode	<input type="checkbox"/>	d) Launching	<input type="checkbox"/>

2. A/ An _____ manages different parts of a computer system.

a) Software	<input type="checkbox"/>	b) Hardware	<input type="checkbox"/>
c) Operating system	<input type="checkbox"/>	d) Wallpaper	<input type="checkbox"/>

3. _____ is a component of the desktop.

a) Wallpaper	<input type="checkbox"/>	b) System tray	<input type="checkbox"/>
c) Middle section	<input type="checkbox"/>	d) All of these	<input type="checkbox"/>






4. To open a program, _____ on its icon.
- a) Click b) Double click
 c) Single click d) Drag mouse
5. Once the computer is started, the screen which appears on the monitor is called the _____.
- a) Table top b) Window
 c) Linux d) Desktop

B. Fill in the blanks.

Wallpaper, Name, Icons, Taskbar, Safe

1. The horizontal bar at the bottom of the desktop is the _____.
2. The background picture on the desktop is called the _____.
3. The small pictures on the screen are called the _____.
4. Icons can be arranged by their size, date, type and _____.
5. In _____ mode, Windows loads with essential files only.

C. Match the following.

Column-I	Column-II
<ol style="list-style-type: none"> 1. Start button 2. This PC 3. Shortcut Icon 4. System tray 5. Quick launch toolbar 	<ol style="list-style-type: none"> a.  b.  c.  d.  e. 

D. Answer the following questions.

1. What is booting?

2. What is GUI made of?

3. What is the use of starting an operating system in safe mode?

4. What happens when you double click on an icon?



Lab-venture ...



Under teachers guidance practice the following:

1. Practice arranging icons in various order on the basis of their types and names.
2. Create a shortcut icon to any software that is installed on your computer.
3. Setup a wallpaper and a screen saver to display your school name as 3D Text.

Teacher's Signature : _____

Teacher's Remark : ☆☆☆☆☆



Beyond the Book

<https://www.thewindowsclub.com/basic-windows-10-tips-tutorials-how-to-for-beginners>

<https://edu.gcfglobal.org/en/windows10/>

संत निरंकारी पब्लिक स्कूल, अतार एन्कलेव

कक्षा - तीसरी
विषय - हिंदी

वर्कशीट - 4 (पाठ - 2 हमारी वर्णमाला)

Given date → 4-5-2020

Submission date - 6-5-2020

प्र० 1. सही शब्द चुनकर खाली स्थान भरिए।

(क) वर्णों के समूह को _____ कहते हैं। (वर्णमाला, व्यंजन)

(ख) दो व्यंजनों के मिलने से _____ बनते हैं। (स्वर, संयुक्त व्यंजन)

(ग) ध्वनियाँ जब बौली और लिखी जाती हैं, तब _____ कहलाती हैं।
(वर्ण, स्वर)

(घ) _____ भाषा की सबसे छोटी इकाई है। (स्वर, वर्ण)

प्र० 2. खाली जगहों में इ और ङ वर्ण लिखिए।

(क) ल _____ की

(ख) _____ ककन

(ग) घ _____ ण

(घ) प _____ ई

प्र० 3. सही जगह पर ' ' और ' ' लगाकर दुबारा लिखिए।

(क) गगन -

(ख) अडा -

(ग) आगन -

(घ) चाद -

प्र० 4. शब्दों में विसर्ग (:) लगाकर लिखिए।

(क) अत -

(ख) प्रात -

BbSANT NIRANKARI PUBLIC SCHOOL, AVTAR ENCLAVE

CLASS : III MATHS

CHAPTER:2

ADDITION

Assignment date- 3-5-2020. Submission Date- 6-5-2020

1)	$\begin{array}{r} 658 \\ + 407 \\ \hline \end{array}$	2)	$\begin{array}{r} 343 \\ + 489 \\ \hline \end{array}$	3)	$\begin{array}{r} 753 \\ + 864 \\ \hline \end{array}$	4)	$\begin{array}{r} 529 \\ + 866 \\ \hline \end{array}$
5)	$\begin{array}{r} 427 \\ + 130 \\ + 216 \\ \hline \end{array}$	6)	$\begin{array}{r} 374 \\ + 241 \\ + 48 \\ \hline \end{array}$	7)	$\begin{array}{r} 571 \\ + 78 \\ + 342 \\ \hline \end{array}$	8)	$\begin{array}{r} 378 \\ + 254 \\ + 163 \\ \hline \end{array}$
9)	$\begin{array}{r} 703 \\ + 255 \\ + 106 \\ \hline \end{array}$	10)	$\begin{array}{r} 471 \\ + 250 \\ + 68 \\ \hline \end{array}$	11)	$\begin{array}{r} 683 \\ + 231 \\ + 157 \\ \hline \end{array}$	12)	$\begin{array}{r} 327 \\ + 261 \\ + 78 \\ \hline \end{array}$
13)	$\begin{array}{r} 475 \\ + 238 \\ + 314 \\ \hline \end{array}$	14)	$\begin{array}{r} 628 \\ + 483 \\ + 326 \\ \hline \end{array}$	15)	$\begin{array}{r} 785 \\ + 427 \\ + 389 \\ \hline \end{array}$	16)	$\begin{array}{r} 819 \\ + 434 \\ + 286 \\ \hline \end{array}$
17)	$\begin{array}{r} 765 \\ + 326 \\ + 471 \\ \hline \end{array}$	18)	$\begin{array}{r} 627 \\ + 198 \\ + 56 \\ \hline \end{array}$	19)	$\begin{array}{r} 946 \\ + 462 \\ + 317 \\ \hline \end{array}$	20)	$\begin{array}{r} 599 \\ + 326 \\ + 478 \\ \hline \end{array}$

" Sant Nirankari Public School
Avtar Enclave
Subject - English
Worksheet 1
Class –III
Chapter 7 Nouns : Common and Proper

Date- 04-05-20

Submission Date- 06-05-20

Points to remember

- Nouns can be of following kinds
- **Common nouns** are names given to things , places , animals or the people of the same kind
- Example : girl , boy
- **Proper nouns** are the name given to particular people , places , animals or things

Examples : Rita , Mohan

Q1 . Match common nouns with proper nouns

- | | |
|------------|--------------|
| 1. Boy | (a) Richa |
| 2. Girls | (b) Rahul |
| 3. City | (c) Mumbai |
| 4. Country | (d) China |
| 5. River | (e) Godavari |

Q2. Underline the common nouns and circle the proper nouns in the given sentence

1. My birthday is in March
2. I will visit Europe in January
3. My father reads 'The Times of India' in the morning
4. Vishesh and Vishal play cricket in the park
5. The leopard has black spots on its body
6. The school remains closed on Saturdays
7. The play is written by Shakespeare
8. She stays in Ranchi